

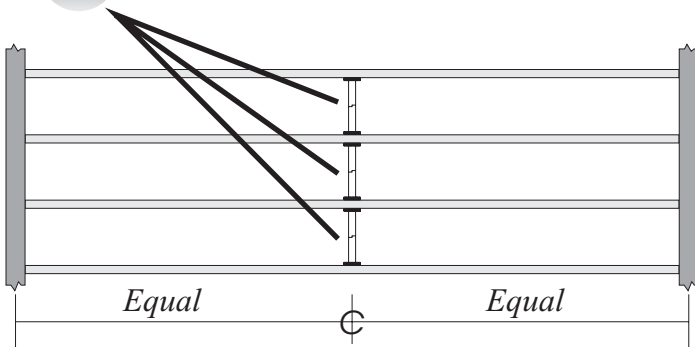
Follow these steps for the proper installation of IBS 2000[®] Load Sharing Connectors.

IBS 2000[®] MUST BE INSTALLED BEFORE SUBFLOOR IS ATTACHED TO JOISTS

1. Laying Out IBS 2000[®] in the Floor

- Install IBS 2000[®] prior to subfloor installation

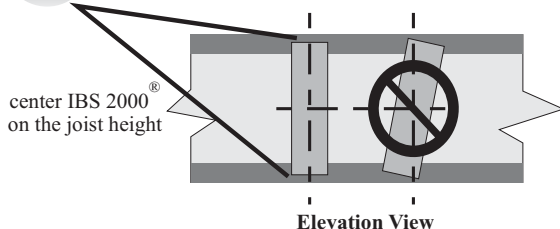
ATTENTIOZ STRAIGHT ROW OF IBS 2000[®] DO NOT STAGGER



- 2 Rows are placed at the 1/3 points
- 3 Rows are placed at the 1/4 points
- Twin Rows are placed 12" either side of mid-span

2. Positioning Unit on the Joist

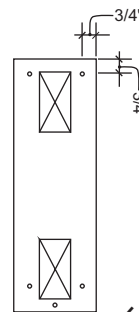
ATTENTIOZ EQUAL GAP ON TOP AND BOTTOM



3. Fasteners Required

Minimum 2 1/4" (7d) common nails. Equivalent length wood screws or spiral/ring shanked nails may also be used.

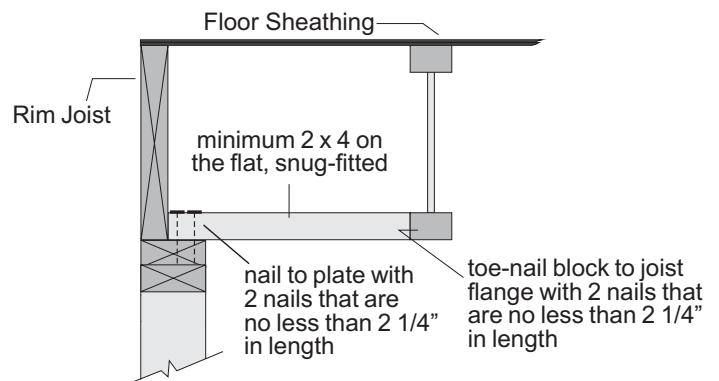
4. Fastener Placement



Nail IBS 2000[®] unit to joist with **5 - 2 1/4" common nails.** 5 equivalent length wood screws or spiral/ring shanked nails may also be used.

ATTENTIOZ DO NOT OVERDRIVE NAILS. HOLD UNIT TIGHT TO JOIST WHEN NAILING.

5. Dealing with Endwall Conditions

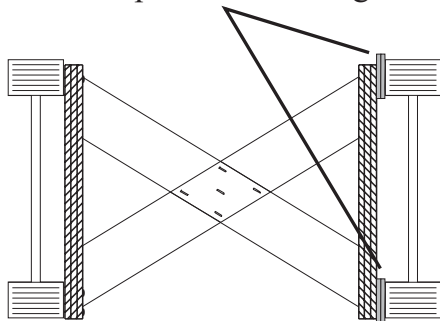


6. Dealing with Gaps



MAKE SURE THERE ARE NO GAPS.

Shim any gaps for tight fit prior to attaching

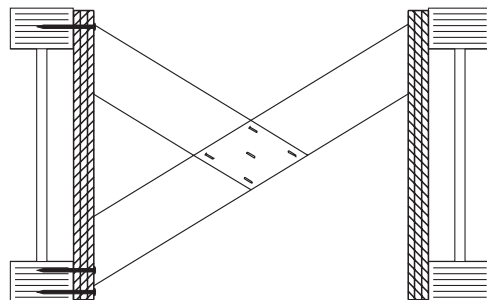


7. Dealing with Ductwork and Odd Sized Spaces

When IBS 2000® load sharing connectors interact with the mechanical elements in a floor the builder has several options to accommodate these elements.

OPTION 1: REMOVE ONE OF THE LEGS

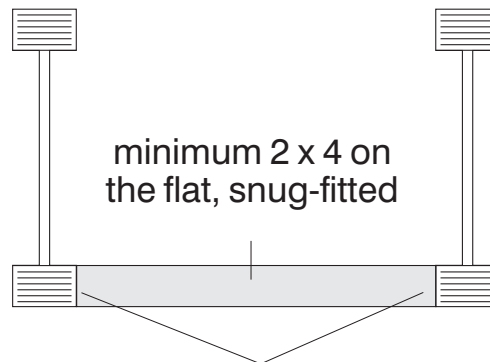
When IBS 2000® connectors have been installed in the floor it is acceptable to remove one of the four legs of the IBS 2000® cross from the center to the outer perimeter. See detail opposite.



Leg cut at the center cross and removed to allow the passage of mechanical elements. Any one of the four legs may be removed to suit the needs of the mechanical contractor.

OPTION 2: SOLID LUMBER BLOCK

Install block after IBS 2000® connectors have been installed in the other areas of the floor.



toe-nail block to joist flange with 2 nails per side. nails to be no less than 2 1/4" in length